



2020 Brochure



Tool Organizers

FEATURES:

- Heavy duty
- Constructed with 1/8" aluminum body
- 12 gauge stainless steel tool holders
- Designed for heavy duty construction sites and agriculture
- Four sizes: 20", 24", 30", 36"
- Two models: with drawers or without
- Drawers have 250lb roller bearing slides
- Dust-proof

Slide the open lid to the left and the lid locks in the open position. Lid is sealed and lockable. With the lid closed, your wrenches and sockets will not bounce loose.

Flip up lid, under socket pegs, provides storage for your pry-bars, punches, etc. Lots of room for your ratchets, sockets, pliers, hammers, etc., all organized. Room for manuals, small parts, and bolts. There are handles on both ends.



20" Tool Organizer

- 14 - 1/4" Sockets
- 19 - Screwdrivers
- 13 - Wrench hooks
- 3 - Ratchets
- Other assortment of holders



24" Tool Organizer

- 14 - 1/4" Sockets
- 13 - 3/8" Sockets
- 19 - Screwdrivers
- 15 - Wrench hooks
- 3 - Ratchets
- Other assortments of holders



30" Tool Organizer

- 19 - 1/4" Sockets
- 13 - 3/8" Sockets
- 25 - Screwdrivers
- 18 - Wrench hooks
- 3- Ratchets
- Other assortments of holders



36" Tool Organizer

- 19- 1/4" Sockets
- 18- 3/8" Sockets
- 25- Screwdrivers
- 28- Wrench hooks
- 3- Ratchets
- Holds standard and metric socket and wrenches
- Other assortments of holders

Tool Chests

FEATURES:

- Tool chest sizes include 32", 40", and 46"
- Designed for a rough and tough environment
- The 32" and 40" are designed to fit under tunnel cover
- All models are built with 1/8" aluminum body and 10 gauge stainless steel tool holders
- Come with heavy duty stainless steel hinges, push button locks, and gas springs
- Dust proof units



32" Tool Chest

- 32 - Wrench holders
- 77 - Deep sockets
- 14 - Screwdrivers
- 2 - 24" wide, 11 1/2" deep, 4" high drawers
- Drawers are self locking and socket rack can be removed and put into the drawer

40" Tool Chest

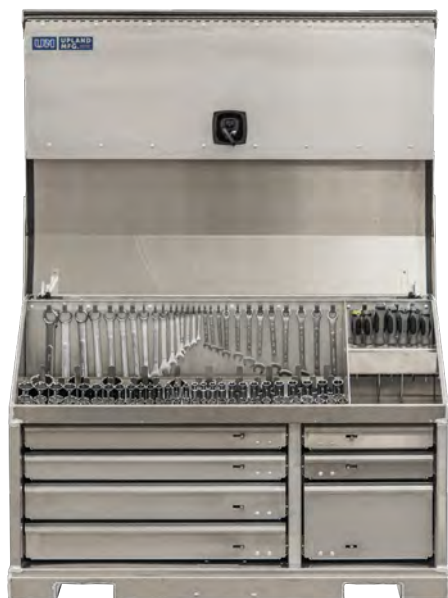
- 32 - Wrench holders
- 77 - Deep sockets
- 77 - Shallow sockets
- 17 - Screwdrivers
- 2 - 34" wide, 15 1/2" deep, 4" high drawers
- Drawers are self locking and socket rack can be removed and put into the drawer

46" Tool Chest

- 32 - Wrench holders
- 81 - Deep sockets
- 90 - Shallow sockets
- 21 - Screwdrivers

DRAWER SIZES

- 2 26" wide, 18" deep, 3" high
- 2 26" wide, 20" deep, 4" high
- 2 12" wide, 18" deep, 3" high
- 1 12" wide, 20" deep, 8" high



TOOL CHESTS
Dimension details on pg 26



UPLANDMFG.COM

Truck Drawer Toolboxes

FEATURES:

- Two models: 38" and 48"
- Designed to fit under tunnel cover
- Set up with drawers and a top tool tray
- Come with heavy duty stainless steel hinges, push button locks, and gas springs
- Dust proof



38"

Truck Drawer Toolbox

- Comes with three large drawers and four small drawers.
- Large drawers have 250lb roller bearings and small have 100lb roller bearings.
- All drawers are self locking.
- Top tool tray is 2" deep

LARGE DRAWERS

- 20" wide x 16½" deep
- 1 - 3" drawer
- 1 - 4" drawer
- 1 - 6" drawer

SMALL DRAWERS

- 10½" wide x 16½" deep
- 3 - 3" drawers
- 1 - 4" drawer



48"

Truck Drawer Toolbox

- Comes with four large drawers and five small drawers.
- All drawers have 250lb roller bearings.
- All drawers are self locking.
- Top tool tray is 2" deep

LARGE DRAWERS

- 20" wide x 16½" deep
- 1 - 3" drawer
- 1 - 4" drawer
- 1 - 6" drawer

SMALL DRAWERS

- 10½" wide x 16½" deep
- 3 - 3" drawers
- 1 - 4" drawer

Flat Bed Toolboxes

FEATURES:

- Designed to work off the back of your truck
- Haul an extra 2000lbs on top
- Armergaurd top for grip with tie down D rings on side
- Optional tool organizing in drawers
- Standard height of 8"
- 10" and 12" height optional



Complete Truck Bed Toolbox

- Designed to fit pickup trucks with a 5 ½' or 6 ½' box
- Center measurement is 45 ½" wide
- Armerguard top
- Self locking drawers and tie down D rings
- Two front 20" cubby holes for tool bags and tool sets - is lockable
- Optional tool organizing in drawers
- 2-Drawer: 18 ¼" wide & 5' deep
- 3-Drawer: 2 - 14" wide drawers, 1 - 9" wide center drawers, 5' deep
- All drawers come with dividers in 1 ½" increments

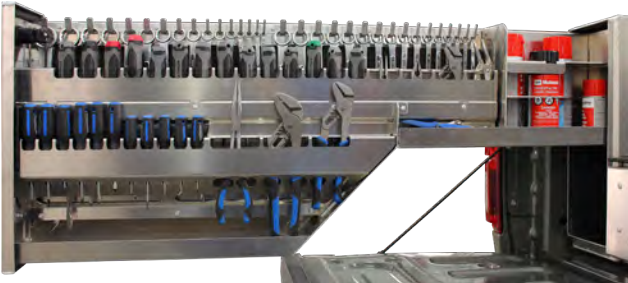
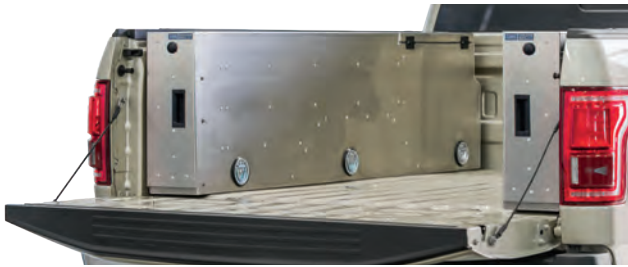
Flat Bed Toolbox

- 13" wide x 70" long x 4" deep
- Self locking drawers
- Drawers have a 250lb capacity
- Drawers come with dividers in 1 ½" increments
- 2 drawer models also available



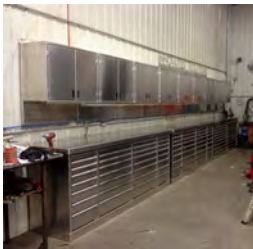
Pickup Truck Side Box

- Armergaurd top for grip
- Tie down D rings on side
- Optional tool organizing in draws
- 42" long models or full length of box
- Miscellaneous shelves compartment with 1" dividers
- Tool organizing drawer holds 32 wrenches, 25 screwdrivers, 7 pliers & 3 spray cans
- Socket organizer drawer holds 57 deep sockets & 57 shallow sockets



Custom Cabinets Available

Below are a few examples of the custom cabinets we can build for you. If you are interested in a custom cabinet option, please contact us for details.



Service Decks Custom & Standard

FEATURES:

- All aluminum
- Standard and custom built models
- Side compartments for welders, air tools and organizing drawers
- All drawers are locking
- Custom and gooseneck hitches
- All doors are sealed and lockable
- Welding trucks are set up with cabinet tank storage and welding consumables

Workstation Parts Organizers

FEATURES:

- Three models: one bank, two bank, and three bank
- Comes with 250lb roller bearings on drawers, 10 gauge steel top, and 16 gauge steel bottom to mount crimping machine
- Four colours: blue, grey, green, and red powder coating
- Drawer Size Options: 24" wide and 24" deep or 24" wide and 20" deep
- 30 adjustable compartments per drawer with 3", 4", 5", and 6" drawer depths
- Contact for custom layouts



1 Bank Unit Workstation

- 3 - 3" drawers
- 3 - 4" drawers
- 3 - 5" drawers

- 4 color options



2 Bank Unit Workstation

- 6 - 3" drawers
- 6 - 4" drawers
- 6 - 5" drawers

- 4 color options



3 Bank Unit Workstation

- 9 - 3" drawers
- 9 - 4" drawers
- 9 - 5" drawers

- 4 color options



Drawer Organizers

FEATURES:

- layout as drawers are organized



2 Bank Part Organizers with Shelving



Workbenches

FEATURES:

- Heavy duty all aluminum construction
- Workbench top and bottom base manufactured from 3/16" thick aluminum
- Workbench sides, back, and drawers manufactured from 1/8" aluminum
- 6" diameter heavy duty 1500lb casters
- 6000lb total cast capacity
- Two casters are fixed, other two are locking swivel
- Comes with grab handle and one key locking unit that locks all drawers



39" Workbench

- Drawer sizes are 24" x 28".
- All drawers come with 250lb roller bearings.
- 18" high tool hanger
- 2 - 3" drawers
- 2 - 4" drawers
- 1 - 5" drawer
- 1 - 8" drawer



79" Workbench

- 79" width
- 29" depth
- 40" height
- 18" high tool hanger
- Large drawer sizes are 24" deep x 28" wide.
- Small drawer sizes are 24" deep x 14" wide.
- All drawers come with 250lb roller bearings.
- One bank of Large drawer



59" Workbench

- Large drawer sizes are 24" deep by 28" wide.
- Small drawer sizes are 24" deep by 14" wide.
- All drawers come with 250lb roller bearings.
- 18" high tool hanger

ONE BANK OF LARGE DRAWERS

- 2 - 3" drawers
- 2 - 4" drawers
- 1 - 5" drawer
- 1 - 8" drawer

ONE BANK OF SMALL DRAWERS

- 2 - 3" drawers
- 4 - 4" drawers
- 1 - 5" drawer

ONE BANK OF LARGE DRAWERS

- 2 - 3" drawers
- 2 - 4" drawers
- 1 - 5" drawer
- 1 - 8" drawer

TWO BANKS OF SMALL DRAWERS

- 4 - 3" drawers
- 8 - 4" drawers
- 2 - 5" drawers



Workbench Deluxe

FEATURES:

- Heavy duty all aluminum construction
- Workbench top and bottom base manufactured from 3/16" thick aluminum
- Workbench sides, back, and drawers manufactured from 1/8" aluminum
- 6" diameter heavy duty 1500lb casters
- 6000lb total cast capacity
- Two casters are fixed, other two are locking swivel
- Comes with grab handle and one key locking unit that locks all drawers

Shop Top Toolboxes

FEATURES:

This organizer is designed to hold all standard and metric tools, screwdrivers and wrenches that you use every day. Everything has its place and is designed so that when the job is done you know exactly what tool is missing. There is no reason for missing tool.

Heavy duty all aluminum construction. Organizer top and bottom base are manufactured from heavy duty aluminum or steel power coated.



Organizer Top Toolbox

TOP HOLDS

- 13- Screwdrivers
- 78- Deep sockets
- 78- Shallow sockets
- For 1/4", 3/8", 1/2" drive
- 32- Wrenches
- 24-gearhead wrenches
- Holds 1/4", 3/8", 1/2" ratchets and extension

TOP LARGE DRAWERS

- 12" wide x 16" deep
- 6 - 3" drawer

TOP SMALL DRAWERS

- 8 1/4" wide x 16" deep
- 1 - 6" drawers

Shop Bottom Toolbox

BOTTOM LARGE DRAWERS

- 24" wide x 20" deep
- 2 - 3" drawer
- 2 - 4" drawer
- 1 - 5" drawer
- 1 - 8" drawer

BOTTOM SMALL DRAWERS

- 12" wide x 20" deep
- 2 - 3" drawer
- 2 - 4" drawer
- 1 - 5" drawer
- 1 - 8" drawer

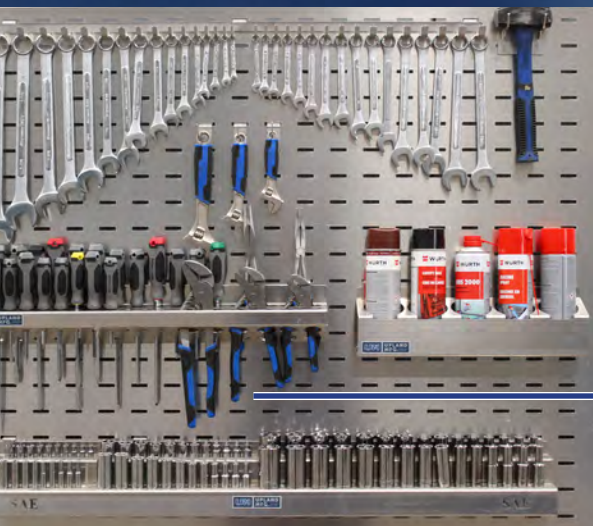
TOP WIDE DRAWER

- 39 1/4" wide x 20" deep x 4" high

Aluminum Pegboard

FEATURES:

- Standard 36" height, 12" to 120" lengths
- Custom heights available
- 36" high - \$40.00 per foot



Socket Holder

- Standard or Metric
- Holds 15 - 1/2" drive sockets, 12 - 3/8" drive sockets, & 10 - 1/4" drive sockets
- Holds both shallow & deep sockets - \$100.00/ea



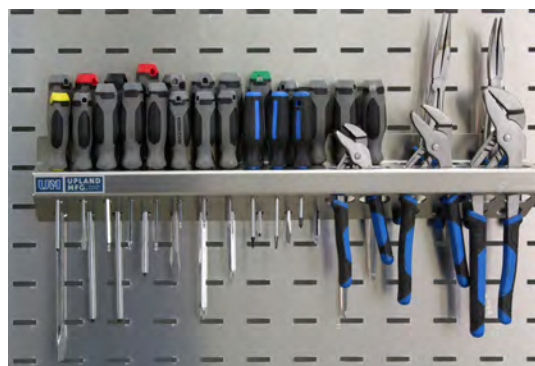
Wrench Holder

- Hooks for 16 standard & 16 metric - \$32.00/ea
- Socket head wrench holder holds 12 standard & 12 metric - \$30.00/ea



Spray Can Holder

- Holds 23 screwdrivers & 5 pliers - \$20.00/ea



Screwdriver & Pliers Holder

- Holds 23 screwdrivers & 5 pliers - \$30.00/ea

Pegboard Accessories

Aluminum pegboard tool organizing accessories.
Tools not included



Adjustable Wrench Holder

· \$15.00/ea



Grinder Holder

· \$20.00/ea



Vice Grip Holder

· \$15.00/ea



Hammer Holder

· \$10.00/ea



Cordless Tool Holder

· \$15.00/ea



Battery & Charger Holder

· \$15.00/ea

Single Hooks

- Small: 2 1/2" long
- Medium: 4" long
- Large: 6" long
- \$5.00/ea



Wrench Organizer

- Standard or Metric
- Stubby - \$15.00/ea - Standard - \$20.00/ea

Worktables



1

2

3

Image depicts bank storage layouts, not worktable configurations. Custom configurations available upon request.

FEATURES:

- Customizable work tables
- Come in three models: drawers, doors, or open adjustable shelving
- Worktables come with 250lb weight capacity on all drawers

1



Worktable with Drawers

- 3 sections of drawers 24" deep x 31" wide
- 3 - 3" drawers
- 6 - 4" drawers
- 6 - 5" drawers
- 3 - 9" drawers

2



Worktable with Drawers & Doors

- 3 sections of drawers 24" deep by 31" wide and doors
- 3 - 3" drawers
- 3 - 4" drawers
- 22" adjustable shelving

3



Worktable with Drawers & Shelving

- 3 sections of drawers 24" deep by 31" wide and doors
- 12 - 4" drawers
- 17" adjustable shelving

Toolbox Organizers

SIZE	WIDTH	HEIGHT	DEPTH
20"	21"	15"	10 ½"
24"	26"	18 ½"	15 ½"
w Drawer	26"	22 ¾"	15 ½"
30"	32"	18 ½"	15 ½"
w Drawer	32"	22 ¾"	15 ½"
36"	39"	18 ½"	15 ½"
w Drawer	39"	22 ¾"	15 ½"

Workstation Parts Organizers

MODEL	WIDTH	HEIGHT	DEPTH
1 Bank	30"	42"	21 ¾" 25 ¾"
2 Bank	58"	42"	22" 26"
3 Bank	86"	42"	22" 26"

Tool Chests

SIZE	WIDTH	HEIGHT	DEPTH
32"	33"	19"	19"
40"	40 ¾"	20 ½"	24"
46"	46 ½"	32"	30"

Flat Bed Toolboxes

MODEL	WIDTH	HEIGHT	DEPTH
Complete			
Flat Bed	48"	8"	5 ½' 6 ½'
Side Boxes	5"		5 ½' 6 ½'



Worktables

MODEL	WIDTH	HEIGHT	DEPTH
Drawers	112"	37"	28"
w Doors	112"	37"	28"
w Shelving	112"	37"	28"

Truck Drawer Toolboxes

SIZE	WIDTH	HEIGHT	DEPTH
38"	38 ½"	17 ½"	20"
48"	49"	20 ½"	20"

Shop Top Toolboxes

MODEL	WIDTH	HEIGHT	DEPTH
Organizer	23"	22"	44"
Top Drawer	23"	22"	44"
Bot. Drawer	39"	22"	42"

2 Bank Part Organizers

MODEL	WIDTH	HEIGHT	DEPTH
	58"	84"	21 ¾" 25 ¾"

Workbenches

SIZE	WIDTH	HEIGHT	DEPTH
39"	39"	40"	29"
59"	59"	40"	29"
79"	79"	40"	29"

Need something custom built?

We can build to your exact specifications to ensure you can find a product that satisfies your need. Get in touch with us to start a conversation about getting your Upland product made to order.

Contact Us

Phone: 204 865-2373

Email: sales@uplandmfg.com



UPLANDMFG.COM



**UPLAND
MFG.** MINNEDOSA
MANITOBA